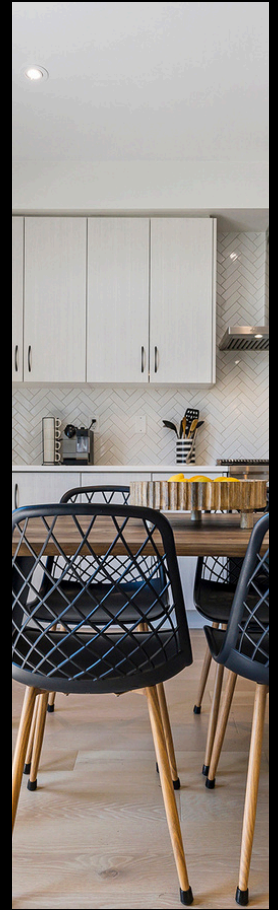


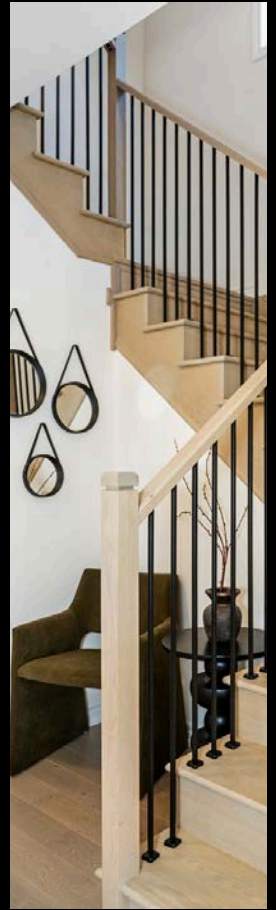
Welcome Home

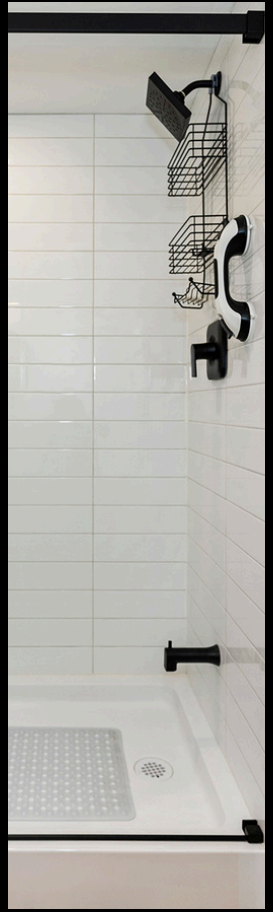


42 SHEPHERD DRIVE
BARRIE, ON

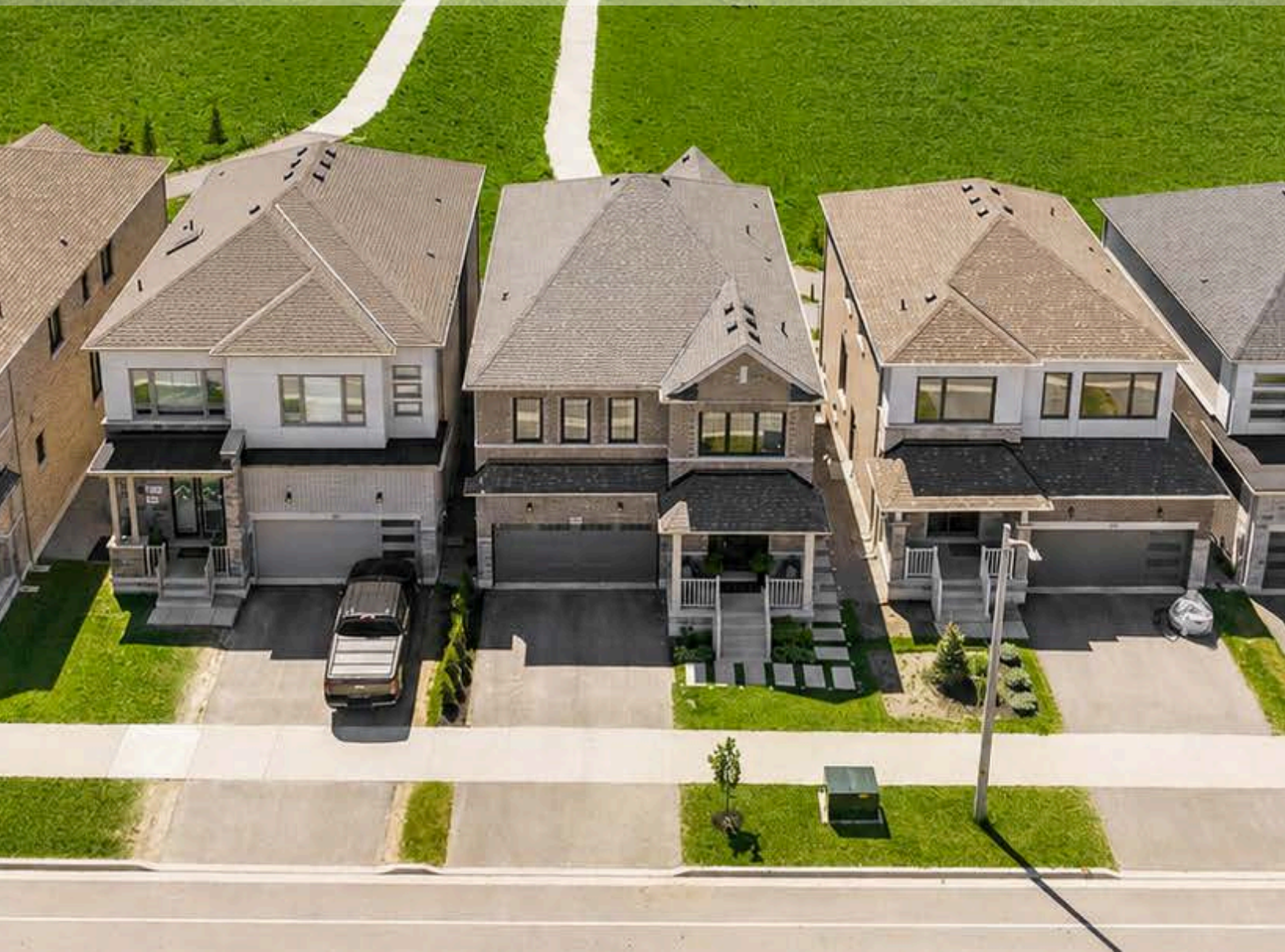








BARRIE'S SOUTH END HAS A WELCOMING, ESTABLISHED FEEL THAT BLENDS MODERN CONVENIENCE WITH EVERYDAY LIVABILITY. TREE-LINED STREETS, NEWER HOMES, PARKS, TRAILS, AND POCKETS OF GREENSPACE CREATE A SENSE OF OPENNESS THROUGHOUT THE COMMUNITY. EVERYTHING NEEDED FOR DAILY LIFE IS CLOSE AT HAND, FROM SCHOOLS AND RECREATION FACILITIES TO SHOPPING, RESTAURANTS, AND ESSENTIAL SERVICES. THE WATERFRONT, FRIDAY HARBOUR, AND COUNTLESS OUTDOOR AMENITIES ARE ALL WITHIN EASY REACH, WHILE QUICK ACCESS TO HIGHWAY 400 AND THE GO STATION KEEPS THE REGION WELL CONNECTED. IT'S A NEIGHBOURHOOD THAT OFFERS THE PERFECT BALANCE OF ACTIVITY AND TRANQUILITY, WHERE BUSY DAYS ARE MATCHED BY PEACEFUL EVENINGS AND BEAUTIFUL OPEN VIEWS.





DANIELLE MOSCHELLA

Real Estate Broker and Consultant
Residential & Commercial

416.454.1007
BUYSELLWITHDANIELLE.CA

SEARCH PROPERTIES HERE
or GET YOUR FREE INSTANT
HOME VALUE



REMAX
ESCAPMENT
REALTY INC. BROKERAGE
INDEPENDENTLY
OWNED & OPERATED

